

Welding systems at Carr's.

Stannah Stairlifts approached Carr's Welding Techniks in 2002 to build and develop a welding system for them to weld on an insert to their rails.

The rails for carrying the motorised chair, are joined together by a short jointing tube, which is welded in place by the Carr's Joint Tube



Welder. This semi-automatic machine does 3 welds inside the tube, to weld the joint insert in position. The welds are tested to 2 tonnes. This machine has been developed over the last 2 years and is now in production at Stannah's Blaydon facility.



This photograph shows the welding head of the joint tube welder. The rail (here cut away) is welded in 3 places by a rotating lance.

Synchronised controls ensure the rail is in the correct position, prior to welding.

Need to automate a welding job? Ring Phil on 01536 412828.



CARR'S UPDATE

Laser number 6. Faster and better!!



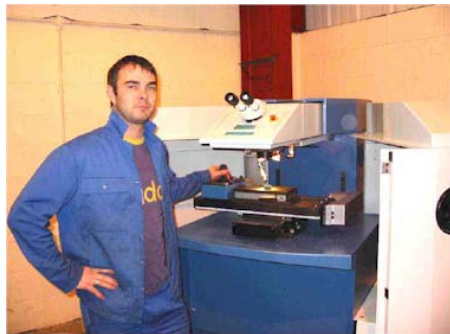
Typical job now welded on the new Star weld Laser no.6 at Carr's.

Carr's have installed their 6th laser welding machine at Kettering, continuing the updating of the facility. This latest system from Germany as expected, is more powerful, diverse and flexible. New software options allow synchronised movements on complex geometry, so increasing weld integrity and ease of application.

Carr's are always looking to widen the boundaries of their work. They now repair shot guns for gunsmiths, as well as tools, jewellery, machine parts, electronic devices, optical equipment etc etc.

Continued-

Laser No 6 continued.



The new Star weld laser at Carr's with our Dean Buckland.

Shooting may be the sport of Kings, but the guns still wear out or get corroded. The intricate parts of a shot gun or rifle can be repaired and refurbished like any other metal part. Often older guns have been hand made and so each part is made to fit that gun only. Laser welding is the safest way to

weld only-one-on-the-planet-parts. Carr's have now repaired many gun parts and are familiar with the steels that are used.

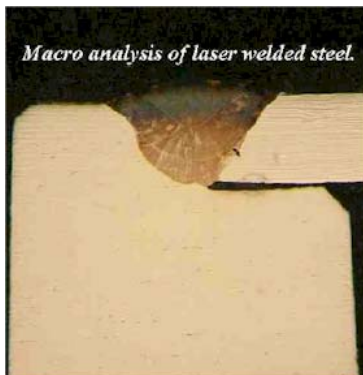
Need a part of your gun welding? Talk to Carr's.

Welding Development.

Carr's Welding use a number of different laboratories for doing weld analysis. Macros (where the join is cut up and the weld pattern photographed) are easily done and back up visual inspection. SEM analysis

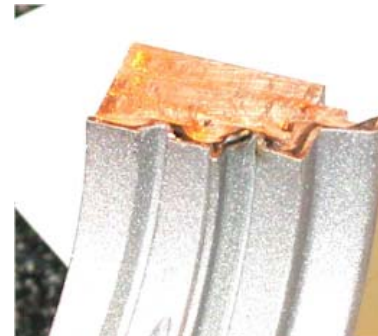
(Electron-microscope) is done to look at the chemical make-up of the parent and weld materials. This way, trace elements can be pin-pointed and tuned to ensure that not only are the welds crack free, but the metal is good for the life of the product.

*Tricky welding job?
Come to Carr's*



Macro analysis of laser welded steel.

Application Stories.



Bottle mould neck insert laser welded on nick.

Carr's weld and repair bottle moulds and this is usually damage on the edge of the neck insert or on the main body of the tool. Often small nicks can be welded and hand finished, especially when the 2 halves of the tool can be put together and dressed.

The laser welds aluminium and steel tools with the same level accuracy and detail, so no weld lines or witness marks are left after the repair.

[Need small neat welds?? Come to Carr's.](#)

Contact details. Workshop:- Alistair Houghton

Sales :- Phil Carr.

SouthWest Area.:- Syd Jarrams 01905 776334

South East Area :- Ken Wilcock 0208 9798115

North West Area :-Pete Casson 0161 973 7966

North East Area, including Cumbria and North Lancashire :- Ian McLachlan 01524 791753

Carr's Welding Technologies Ltd

2 Henson Park, Telford Way Ind. Estate, KETTERING, NN16 8PX.

Telephone **Works 01536 412828** Works Supervisor. 01536 522431

Fax no. 01536 310262 Phil Carr Mobile no. 07801 750016

Email address phil.carr@carrswelding.co.uk

web site www.carrswelding.co.uk